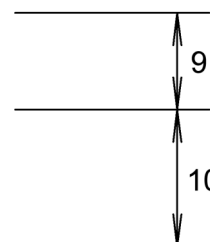
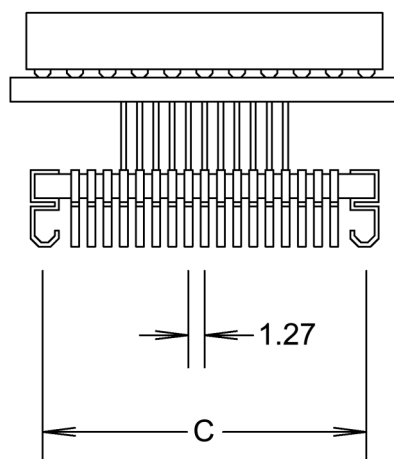
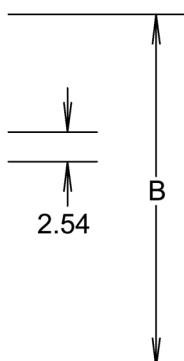
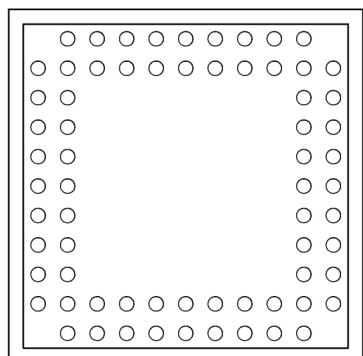
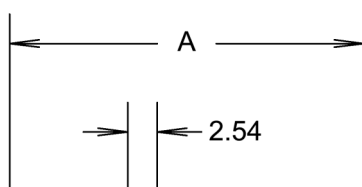
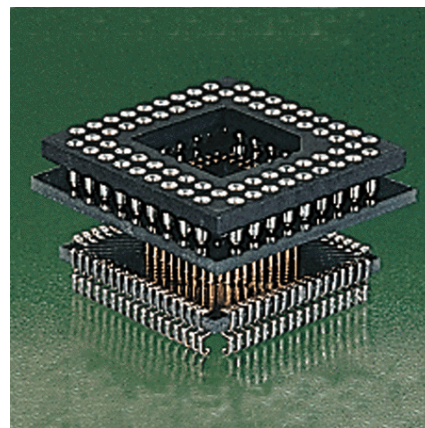




# WINSLOW ADAPTICS

## WA0xx127SD PGA to PLCC 'J' lead adapter series

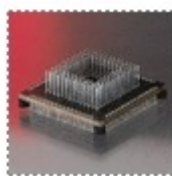
Part Number	Top Package	Bottom Package	'A'	'B'	'C'
WA020127SD	PGA20	PLCC20	12.7	12.7	7.9
WA028127SD	PGA28	PLCC28	15.3	15.3	10.4
WA032127SD	PGA32	PLCC32	15.3	17.8	10.4/12.9*
WA044127SD	PGA44	PLCC44	20.3	20.3	15.5
WA052127SD	PGA52	PLCC52	22.9	22.9	18.0
WA068127SD	PGA68	PLCC68	27.9	27.9	23.1
WA084127SD	PGA84	PLCC84	33.0	33.0	28.2



\* Note the PLCC32 package is rectangular; hence there are two 'C' dimensions.

Not to scale. All dimensions in millimetres, unless otherwise specified.

Specifications may be subject to alteration without prior notice. Please contact factory for confirmation.



### Solutions to Component Leadtime and Obsolescence

Also available from Winslow Adaptics are cost effective, time saving solutions to test, obsolescence, supply problems and upgrades. OEMs can upgrade equipment with custom Adaptics utilising additional logic, often saving considerable cost and time on re-design. If lead-time becomes an issue contact us for a suitable package converter. We specialise in conversion of all package lead-frames. For further information please contact your nearest sales office

[sales@winslowadaptics.com](mailto:sales@winslowadaptics.com)

[www.winslowadaptics.com](http://www.winslowadaptics.com)