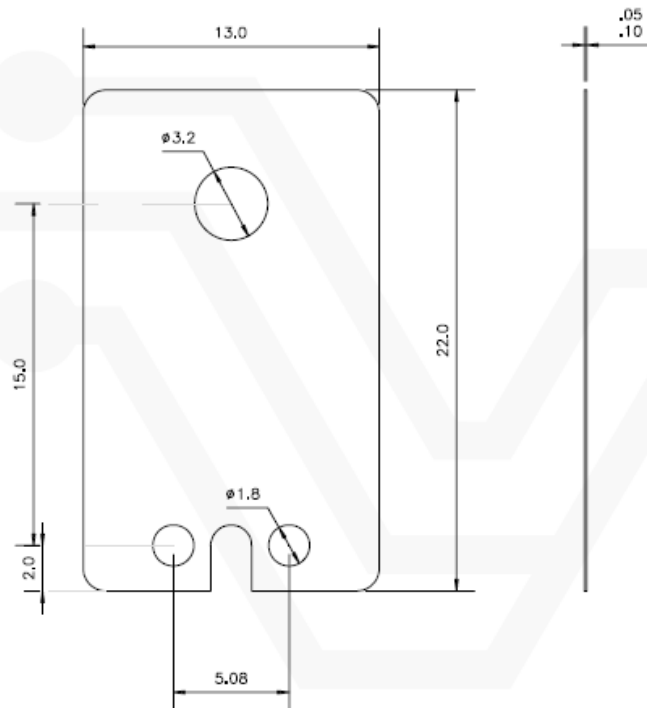




WINSLOW ADAPTICS

Generic Data Sheet TO 220 Mounting Kit - W4605-10



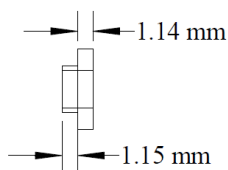
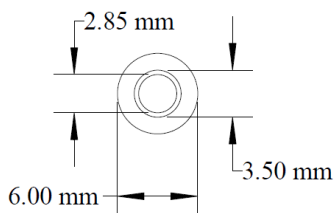
MICA Insulator
P/N : W5803
TO220

Continuous Operating Temp: 500°C
Peak Operating Temp: 700°C

Thermal Conductivity
Perpendicular to plane of the washer : 0.20 W/m*k
Along the plane of the washer : 3 W/m*k
Dielectric Strength: 25 Kv/mm

Thermal Resistance: 0.39cw

Breakdown Voltage: 1KV



Washer
P/N : A224026A

Hole : Clearance on 6BA Screw

Material : 30% GF PBT UL 94-0

W4605-10 Kit contains 10 MICA Insulators & 10 Washers

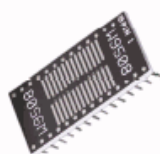
sales@winslowadaptics.com

[DIP Support products from Winslow Adaptics](#)

www.winslowadaptics.com



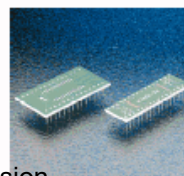
Custom Upgrades



Package



Conversion



Pitch Change

Also available from Winslow Adaptics are cost effective, time saving solutions to test, obsolescence, supply problems and upgrades. OEMs can upgrade equipment with custom Adaptics utilising additional logic, often saving considerable cost and time on re-design. If lead-time becomes an issue contact us for a suitable package converter. We specialise in conversion of all package lead-frames.