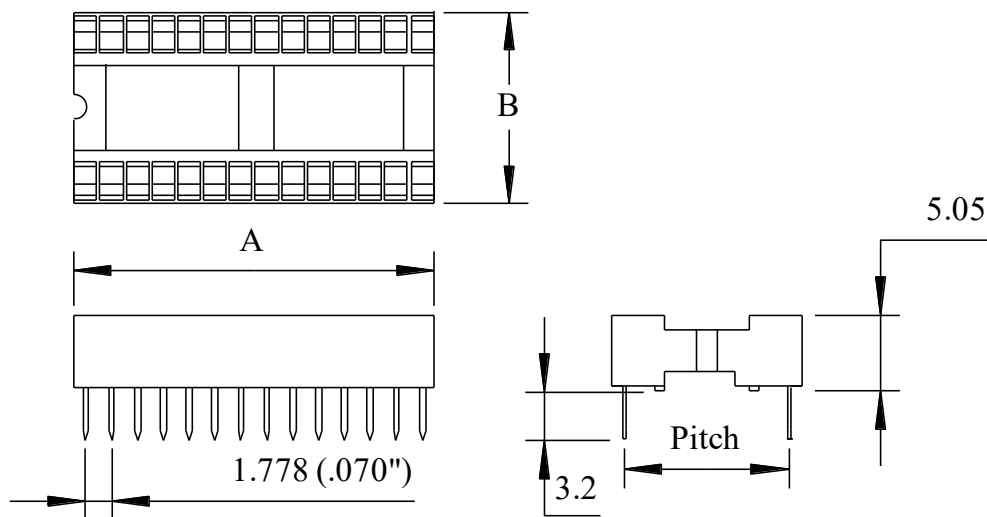
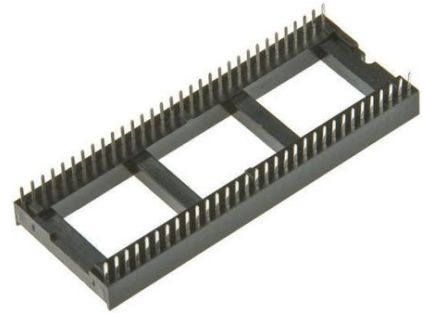




WINSLOW ADAPTICS

Data Sheet – Shrink Stamped I.C. Sockets W3100/xxxTRC W3100/xxxT

The W3100 Shrink Series uses a phosphor bronze contact with 2 plating options RoHS compliant Tin or Tin/Lead . Moulding material is 30%GF PBT rated to UL 94 V-0. Designed for automatic PCB loading machines features include; overstress protection, large target area for ease of IC insertion and a 35 degree angled contact to prevent the IC leg from going behind the contact during insertion.



Part No	Pins	Pitch	A	B	Part No	Pins	Pitch	A	B
W3124/407TRC	24	10.16	21.34	12.70	W3124/407T	24	10.16	21.34	12.70
W3128/407TRC	28	10.16	24.89	12.70	W3128/407T	28	10.16	24.89	12.70
W3130/407TRC	30	10.16	26.67	12.70	W3130/407T	30	10.16	26.67	12.70
W3140/607TRC	40	15.24	35.56	17.78	W3140/607T	40	15.24	35.56	17.78
W3142/607TRC	42	15.24	37.33	17.78	W3142/607T	42	15.24	37.33	17.78
W3164/607TRC	64	19.05	56.89	21.59	W3164/607T	64	19.05	56.89	21.59



WINSLOW ADAPTICS

Data Sheet – Shrink Stamped I.C. Sockets W3100/xxxTRC W3100/xxxT

General Specifications. Unless stated all values are typical.

Contact

Resistance:	10m ohms
Current Rating:	10 amp cont. 2.0 amp peak.
Capacitance:	0.5pF
Material:	Phosphor Bronze
Plating:	W3100TRC Nickel 2.5 microns over Pure Tin 6.0 microns W3100T 60/40 tin/lead 2/3 microns. W3100G Gold in contact area only with solder tail microns over plated Nickel 2.5 Pure Tin 6.0 microns
Insertion Force:	120/130 grams (1.18/1.27n) per pin 0.01" diameter.
Withdrawal Force:	50/70 grams (0.49/0.69n) per pin 0.01" diameter.
Point of contact:	0.061" (1.70mm) from top of socket.
Force to remove From moulding:	1.0lb minimum

Moulding

Material:	Glass-reinforced Polyester (PBT)
Insulation Resistance:	1010 Ohms (contact to contact) at 500VDC
Arc Resistance:	145 seconds at 23 degrees C
Electrical Strength:	121KV/cm at 23 degrees C
Dielectric Constant:	3.9 (48 hrs 90%RH) at 100Hz 23 degrees C 4.5 at 100Hz 121 degrees C 3.7 (48 hrs 90%RH) at 1MHz 23 degrees C 4.3 at 1MHz 121 degrees C
Dissipation Factor:	0.0077 (48 hrs 30%RH) at 100Hz 23 degrees C 0.0300 at 100Hz 121 degrees C 0.0150 (48 hrs 30%RH) at 1MHz 23 degrees C 0.0200 at 1MHz 121 degrees C
Volume Resistivity:	3 x 10 ¹³ ohms-CM (48 hrs 90%RH) at 25 degrees C 10 ¹³ ohms-CM at 121 degrees C
Operating Temperature:	-65 to 150 degrees C
Flammability:	UL94V-0

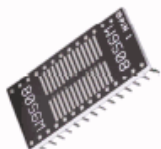
sales@winslowadaptics.com

DIP Support products from Winslow Adaptics

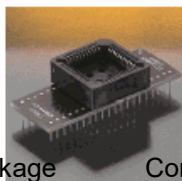
www.winslowadaptics.com



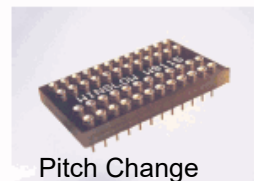
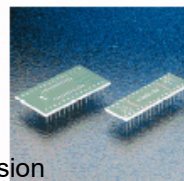
Custom Upgrades



Package



Conversion



Pitch Change

Also available from Winslow Adaptics are cost effective, time saving solutions to test, obsolescence, supply problems and upgrades. OEMs can upgrade equipment with custom Adaptics utilising additional logic, often saving considerable cost and time on re-design. If lead-time becomes an issue contact us for a suitable package convertor. We specialise in conversion of all package lead-frames.