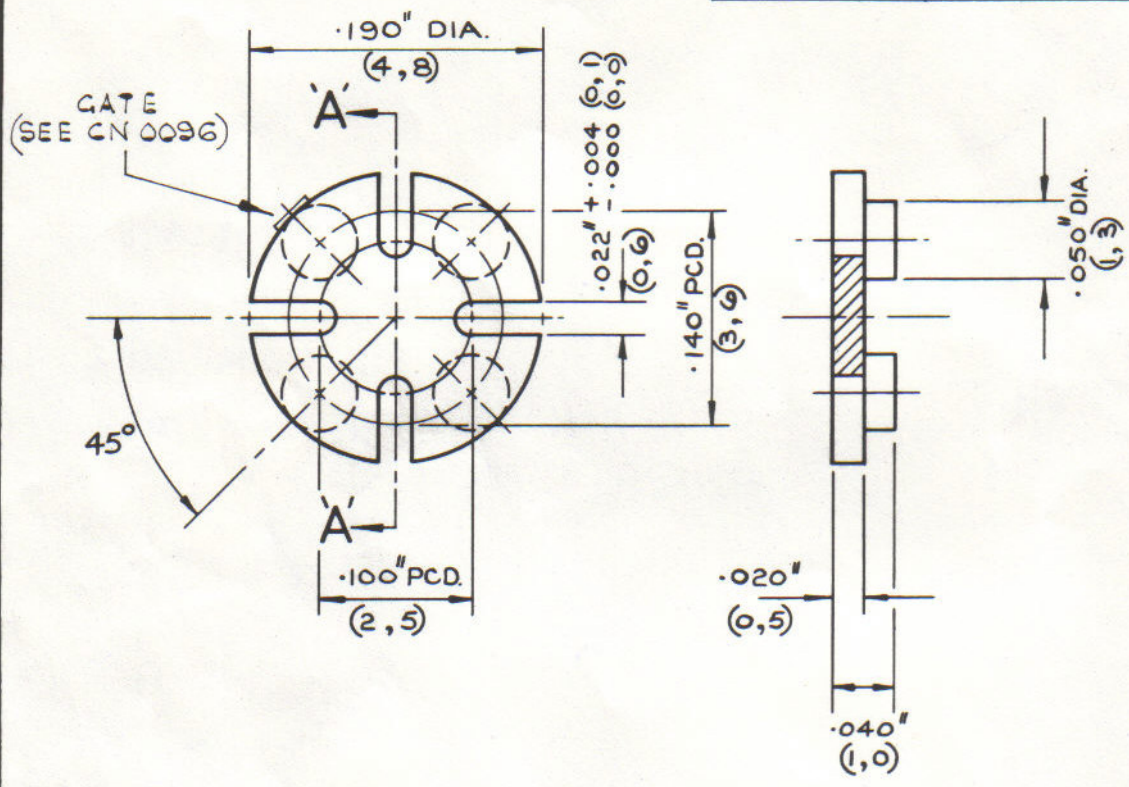


DRG. No.
A 18-1007.

FOR EXPLANATION OF DIMENSIONING, ETC. SEE B.S.308
REMOVE ALL BURRS & SHARP EDGES.
A RADIUS OR CHAMFER .02 (MAX.) IS PERMITTED IN CORNERS
OF BLIND HOLES, RECESSES & STEPS.

THIRD ANGLE PROJECTION

Type No	Part No	Material
T018-007D	J18-1007D	A1406.



SECTION A-A

5. 1.79 F CN No 0096. RN

DATE	CHANGES	
8-6-71	B	RE-DRAWN & METRIC ADDED.
8-3-74	C	TOLS. AMENDED, ±.005" WAS ±.010"
14-1-'77	D	MATERIAL AMENDED. A.
14-3-78	C	Drwg No was A1126 Part No added. CM.

TOLERANCE ±.005" (0,13) u.o.s.	DRAWN	B. LANE
MATERIAL	TRACED	
	CHECKED	
	DATE	8-6-71

TITLE TRANSISTOR MOUNTING PAD	SCALE: 8:1	DRG. No.
	DIMS. INCHES (mm)	A 18-1007.

JERMYN INDUSTRIES VESTRY ESTATE, OTFORD, NR. SEVENOAKS, KENT.

A SIZE.

C.A.F.L. 3047/8