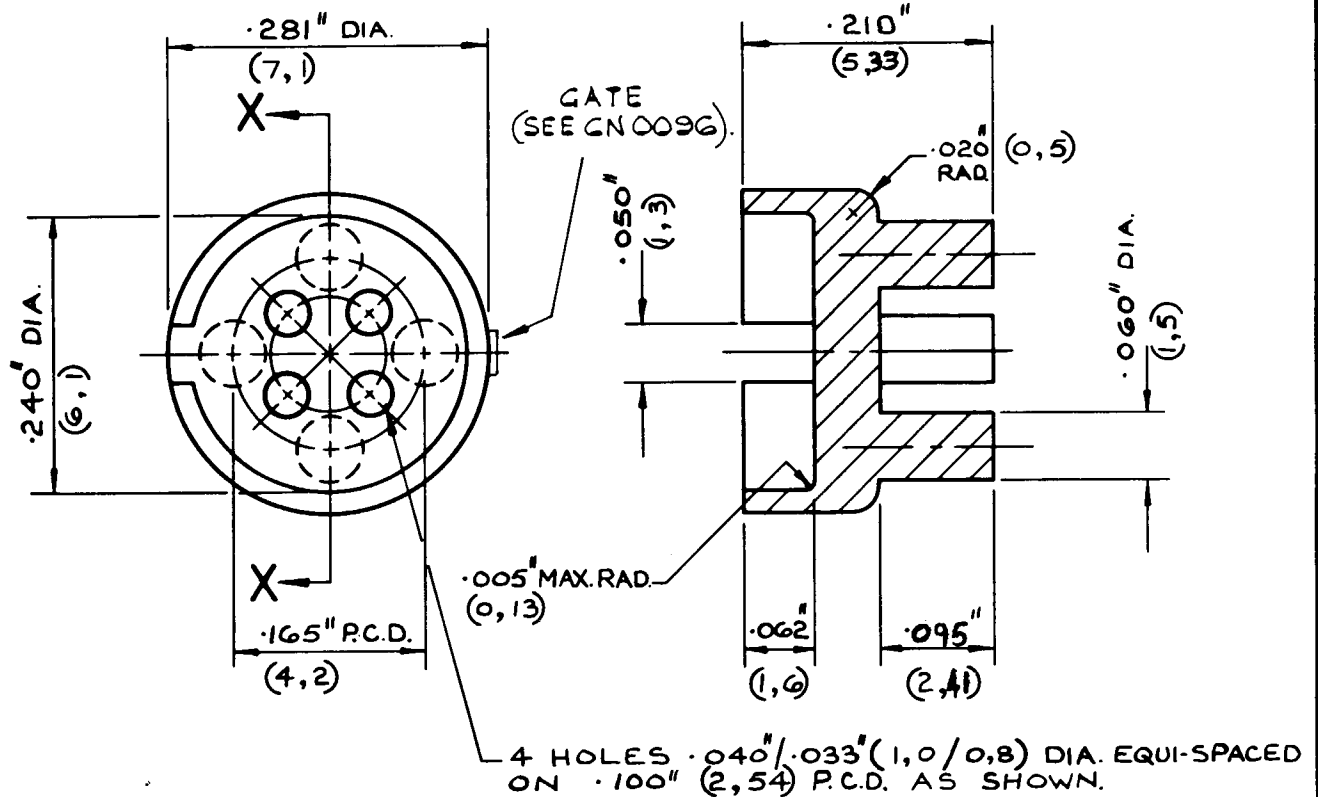


DRG. No.  
A 18-1006

FOR EXPLANATION OF DIMENSIONING, ETC. SEE B.S.308  
REMOVE ALL BURRS & SHARP EDGES.  
A RADIUS OR CHAMFER .02 (MAX.) IS PERMITTED IN CORNERS  
OF BLIND HOLES, RECESSES & STEPS.

THIRD ANGLE PROJECTION

| Type No  | Ref No    | Material |
|----------|-----------|----------|
| T08-006A | J18-1006A | A1406    |
|          |           |          |



SECTION X X

|             |                |                                     |     |
|-------------|----------------|-------------------------------------|-----|
| 25-11-10    | E              | .210" x .095" was .218 x .100"      | AE  |
| <b>DATE</b> | <b>CHANGES</b> |                                     |     |
| 2-6-71      | A              | RE-DRAWN & METRIC ADDED.            |     |
| 14-1-77     | B              | MATERIAL AMENDED.                   |     |
| 14.3.78     | C              | Drwg No was A107A.<br>Ref No added. | EM  |
| 4.1.79      | D              | CN No 0096.                         | RAF |

REMOVE ALL MOULDING FLASH.

|                            |         |          |
|----------------------------|---------|----------|
| TOLERANCE<br>±.005" (0,13) | DRAWN   | B. LANE. |
| MATERIAL                   | TRACED  |          |
|                            | CHECKED |          |
|                            | DATE    | 2-6-71   |

**TITLE** TRANSISTOR MOUNTING PAD.

SCALE: 4-1  
DIMS. INCHES (mm)  
DRG. No. A18-1006

**JERMYN INDUSTRIES**

VESTRY ESTATE, OTFORD, NR. SEVENOAKS, KENT.

A SIZE.

CAF.L.3347