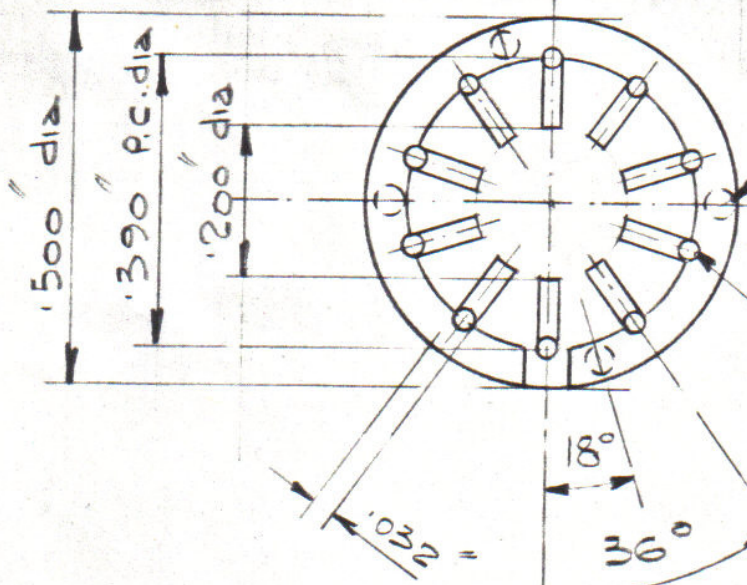
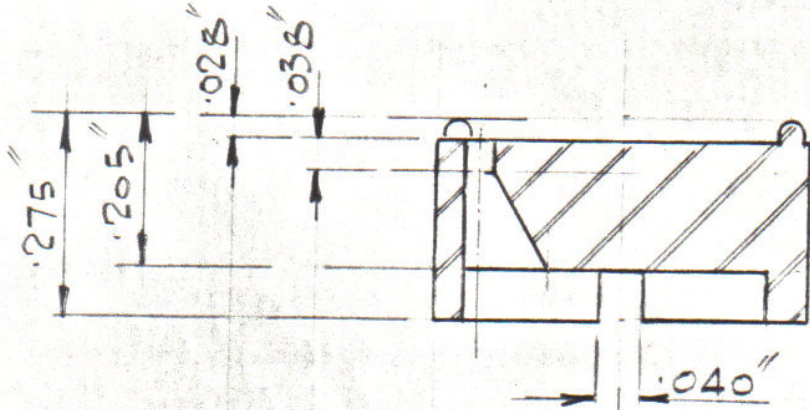


DRG. No.
A 27-0110.

FOR EXPLANATION OF DIMENSIONING, ETC. SEE B.S.308
REMOVE ALL BURRS & SHARP EDGES.
A RADIUS OR CHAMFER .02 (MAX.) IS PERMITTED IN CORNERS
OF BLIND HOLES, RECESSES & STEPS.

THIRD ANGLE PROJECTION



4- .050" dia feet
on .440" P.C. dia

10 Holes $.023^{+0.005}$
thru on .400" P.C. dia

| | | |
|--------|----------|-------|
| TYPE | Part No | Mat |
| RK-10L | J27-0110 | A1406 |

| DATE | CHANGES | |
|-------------------------------|---------|-------------------------------------|
| 14.1.77 | A | MATERIAL AMENDED. AF. |
| 22.2.78 | B | HOLE SIZE WAS .025. RN |
| 10.3.78 | C | Drng No was A1112 Part No added. RN |
| TITLE MICROLOGIC MOUNTING PAD | | |

| | | |
|------------|---------|--------|
| TOLERANCE | DRAWN | REG M. |
| DEC ± .010 | TRACED | |
| MATERIAL | CHECKED | |

| | |
|------|---------|
| DATE | 24-7-67 |
|------|---------|

| | |
|--------------|------------|
| SCALE: 4:1 | DRG. No. |
| DIMS. INCHES | A 27-0110. |

JERMYN INDUSTRIES

VESTRY ESTATE, OTFORD, NR. SEVENOAKS, KENT.

A SIZE.